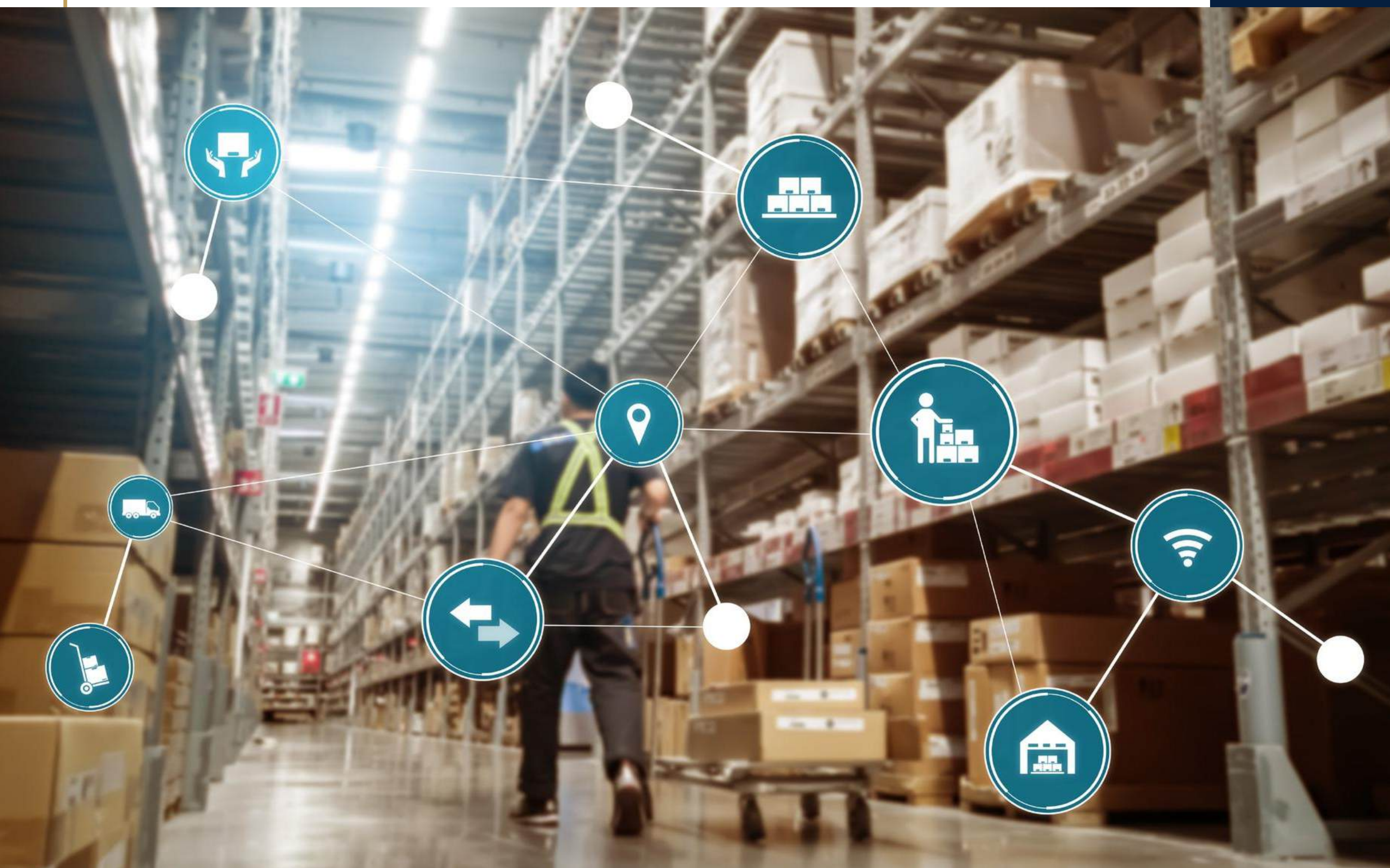




Redefining Enterprise Trading through Intelligent Orchestration





Contents

- 3. Executive Summary
|
- 4. CEO's Foreword
|
- 5. The Crisis of Fragmentation in
| Modern Enterprise Trading
|
- 6. Gem Symphony™ – Architecture of Agility
|
- 10. The Gemini Advantage – Beyond Features
|
- 11. Implementation Excellence
|
- 12. Future-Proofing with Gemini
|
- 13. Conclusion: The Symphony of Success

Executive Summary

We are in times where global supply chains face unprecedented volatility from geopolitical disruptions to AI-driven market shifts enterprises require more than an ERP. They need a **central nervous system** that unifies procurement, inventory, rental, sales, and service operations with military precision.

Gem Symphony™, Gemini Software Solutions' flagship enterprise goods and services trading platform, is engineered to transform fragmented workflows into a **synchronized ecosystem**. With **25+** years of domain expertise and deployments across 20 global locations, Gemini empowers industries like Oil & Gas, Maritime, and FMCG to achieve:

95% Inventory Accuracy

80% Equipment Utilization Rates

30% Reduction in Operational Costs

<2% Stockout Frequency

This whitepaper explores how **Gem Symphony™** leverages modular architecture, automation, and cross-functional integration to future-proof enterprise trading.

CEO's Foreword

Vinay Gupta

Chief Executive Officer
Gemini Software Solutions



To the leaders navigating today's volatile enterprise landscape: Global supply chains demand more than fragmented tools—they require intelligent orchestration. Born from 25 years of industry immersion and 80+ global deployments, Gem Symphony™ is Gemini Software Solutions' answer to this critical need. Our platform unifies procurement, inventory, sales, and service operations into a single command center, delivering 95% inventory accuracy, 30% cost reductions, and 80% asset utilization by transforming siloed workflows into synchronized, AI-driven processes. With modular architecture, real-time automation, and cross-industry scalability, Gem Symphony™ doesn't just solve challenges—it future-proofs enterprises against disruption, turning idle assets into revenue streams and compliance risks into seamless workflows. Partner with us to unlock agility, resilience, and growth. This is not software; it's your strategic advantage. Let's orchestrate success.

The Crisis of Fragmentation in Modern Enterprise Trading

Industry Challenges:



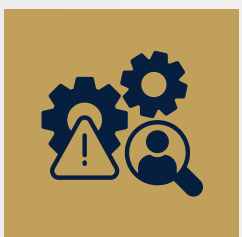
Siloed Systems:

Disconnected procurement, sales, and rental workflows lead to **\$1.2M+** annual waste in excess inventory (McKinsey)



Reactive Decision-Making:

67% of enterprises lack real-time visibility into multi-warehouse operations (Gartner)



Compliance Risks:

Disconnected procurement, sales, and rental workflows lead to **\$1.2M+** annual waste in excess inventory (McKinsey)



Underutilized Assets:

Equipment rental fleets operate at **<50%** efficiency due to poor maintenance scheduling

The Gemini Insight:

“Enterprises don’t need more software they need a command center that unifies physical, financial, and digital workflows.”

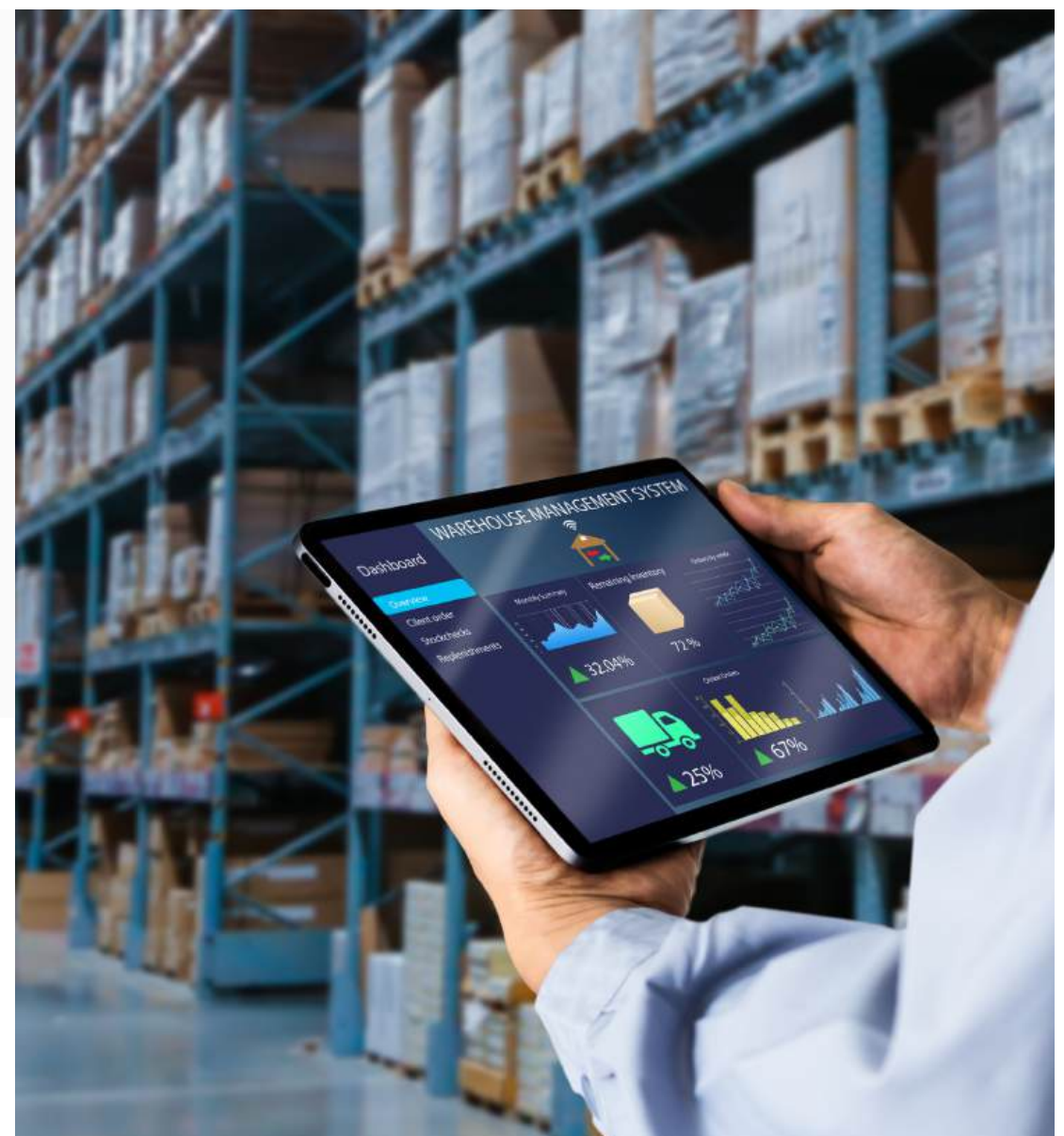
Gem Symphony™ – Architecture of Agility

Core Modules & Innovations:

Intelligent Inventory Management

Multi-Warehouse Control Tower:

Real-time tracking across
400+ SKUs with RFID/Barcode
integration



Predictive Stock Replenishment:

Template-based rules slash
manual intervention while
maintaining fill rates **>90%**

Dynamic Rental & Leasing Engine



Fleet Utilization Analytics:

IoT integration monitors equipment health, predicting downtime before it occurs



Cross-Hiring Marketplace:

Monetize idle assets by leasing to partner networks, boosting utilization to >80%



Automated Maintenance Scheduling:

Reduce damage rates to <2% with AI-driven repair workflows



Procurement-to-Sales Convergence



Multi-Level Authorization Workflows

Role-based approvals align procurement with **budgetary guardrails**



Unified Sales Channels

Streamline counter sales, contract sales, and eCommerce via a **single interface**



Customs Duty Automation

Pre-built compliance templates for 150+ countries, reducing clearance delays by **70%**



Service Management 4.0

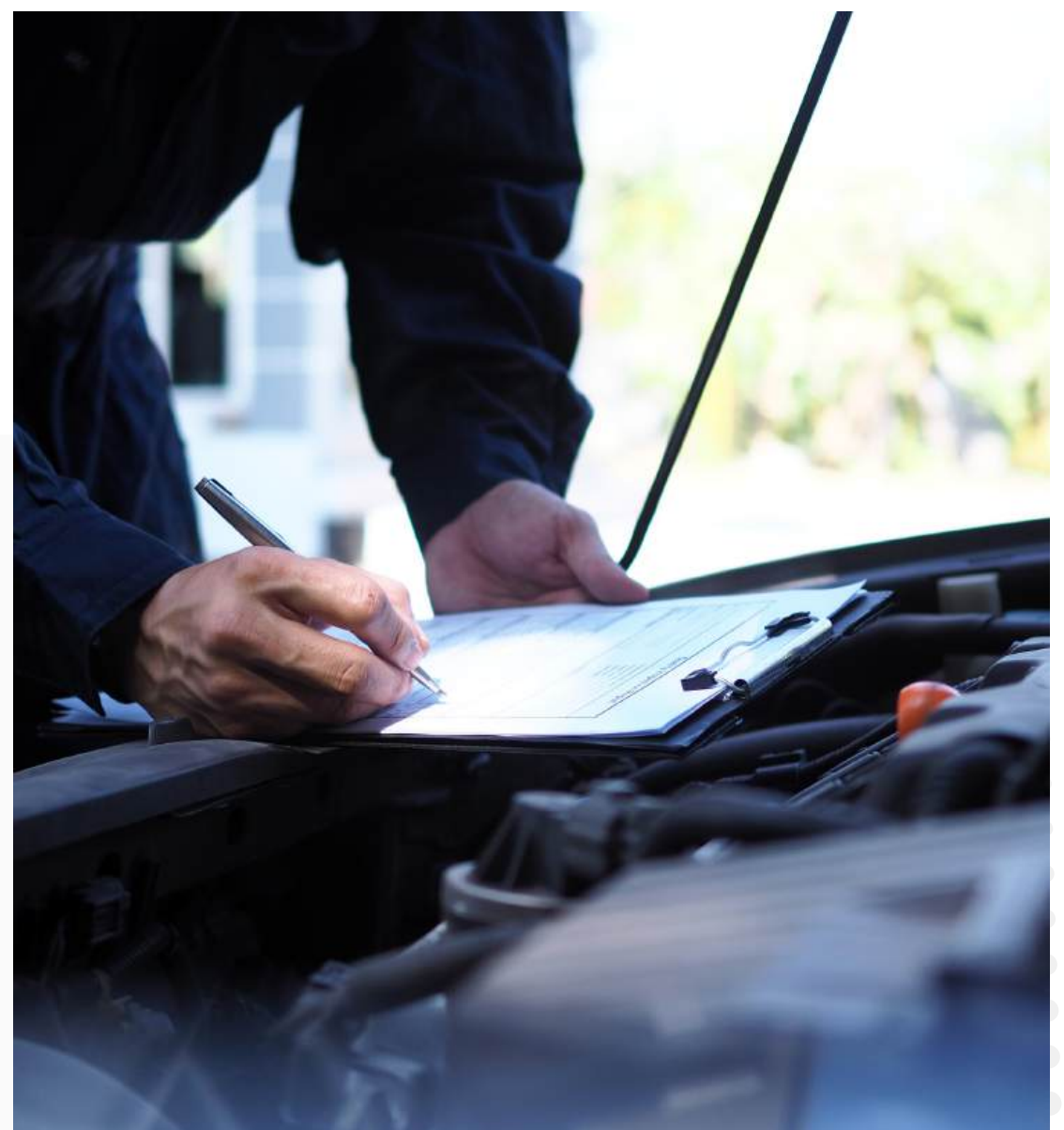


Warranty AI:

Predict claim risks using equipment usage patterns, cutting fraudulent claims by **25%**

Parts Usage Optimization:

95% efficiency via RFID-tagged spare parts tracking



The Gemini Advantage – Beyond Features



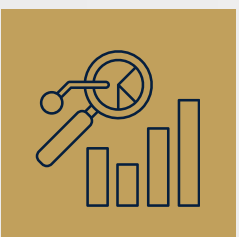
Hyper-Scalability

- Deploy in 8 weeks using pre-configured industry templates (Oil & Gas, Maritime, FMCG).
- Scale across 20+ warehouses without performance lag via AWS/Azure cloud-native architecture.



Security by Design

- GDPR/ISO 27001-compliant with end-to-end encryption, SOC2 audits, and granular user access controls.



ROI Quantification

- **Cost Reduction:** \$500K+ annual savings through automated FinOps and waste reduction.
- **Revenue Growth:** 15% uplift via real-time pricing analytics and cross-hiring monetization.

Implementation Excellence

Phased Deployment Framework:



Diagnostic Audit:

360° assessment of inventory, procurement, and rental workflows



Agile Configuration:

Industry-specific module activation in 2-week sprints



Change Management:

Embedded training simulators and 24/7 support for zero productivity loss

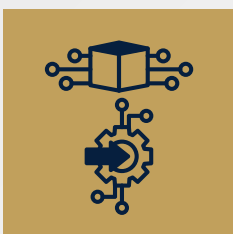
Future-Proofing with Gemini

2025 Roadmap:



GenAI Copilot:

Conversational AI for predictive procurement and anomaly detection



Blockchain Integration:

Immutable audit trails for ESG compliance



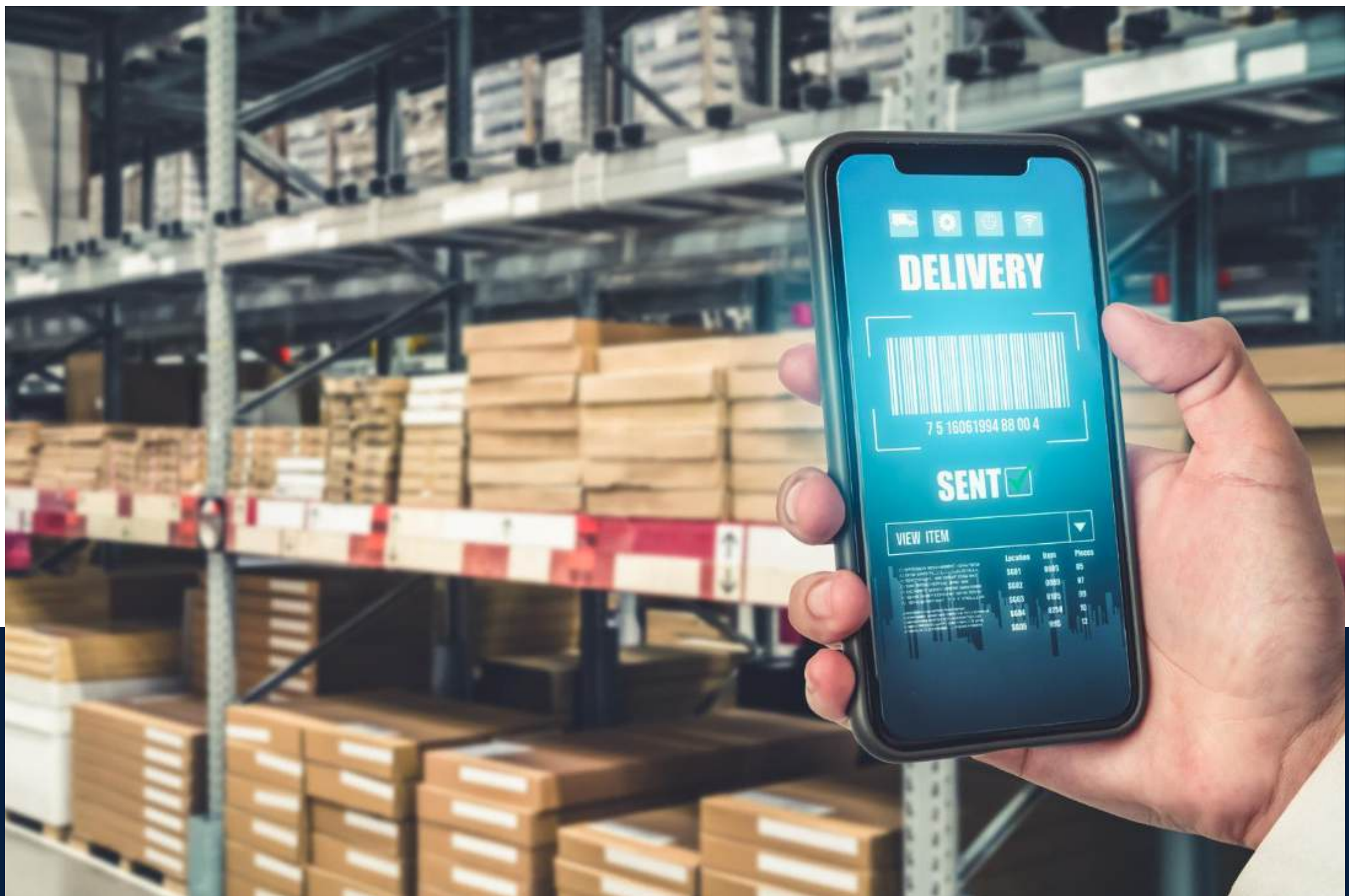
AR Warehouse Navigation:

Hands-free picking via smart glasses integration

Conclusion

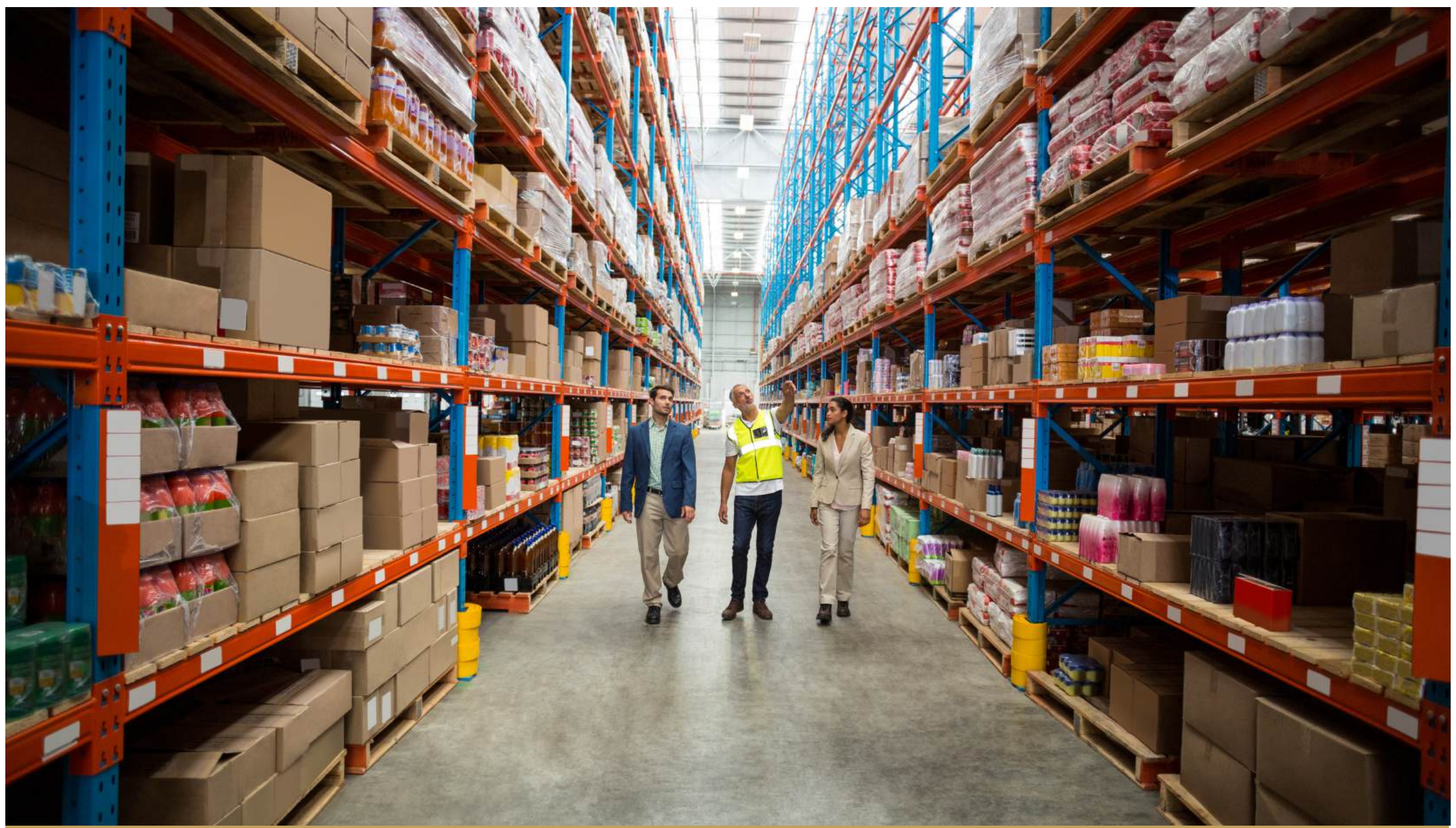
The Symphony of Success

Gem Symphony™ isn't a tool it's a strategic asset that harmonizes people, processes, and technology. With Gemini's **25-year** legacy and **80+** successful deployments, enterprises gain more than efficiency; they gain the agility to lead in the AI era.



About Gemini Software Solutions

Founded in **1998**, Gemini is a distinguished leader in IT products and services, upholding the legacy of **YBA Kanoo Group** with over **26 years** of excellence and innovation in IT solutions.



Digitally Transforming Your Business

🌐 www.geminisoftware.com

✉️ bd@geminisoftware.com